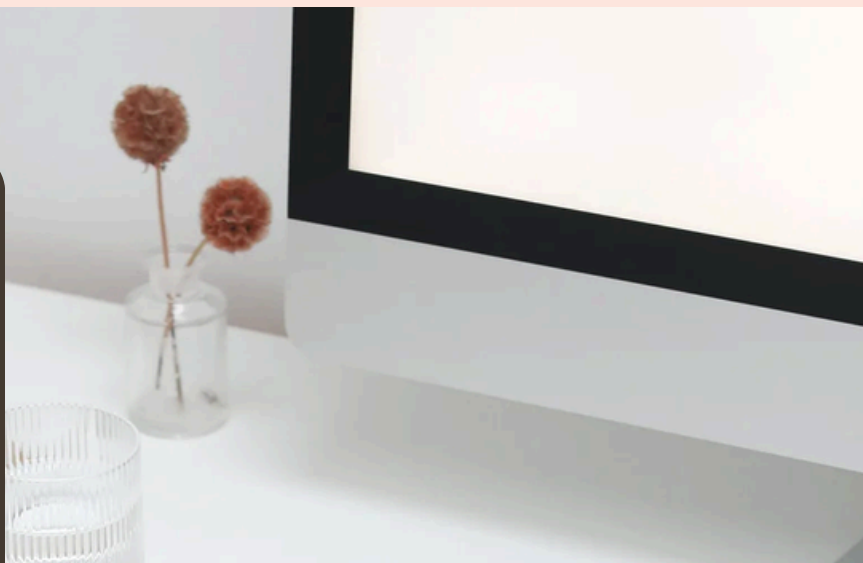


The Feminine
PLATFORM

How to
**COMMAND
ANY ROOM WITH
EFFORTLESS GRACE**



*A 5 steps guide
to level up your
personal presence*

Contents

- 3** WELCOME
- 2** STEP 1: MASTER THE GROUNDED ANCHOR
- 6** STEP 2: USE MAGNETIC EYE CONTACT
- 8** STEP 3: OWN THE POWER PAUSE
- 10** STEP 4: ALIGN YOUR SIGNATURE STYLE
- 12** STEP 5: SET UNAPOLOGETIC BOUNDARIES
- 13** A LITTLE NOTE: SUMMARY
- 15** READY TO GO FURTHER: DISCOVER OUR SERVICES
- 17** MEET THE FOUNDER OF THE FEMININE PLATFORM

Hello and Welcome!

Welcome to Your New Era of Presence

I am so glad you are here. If you have ever felt like you had to toughen up or act like one of the boys to be taken seriously, this guide is for you. At The Feminine Platform, I believe that your greatest strength isn't found in a loud voice or a forced persona it's found in your authentic feminine power.

True presence is the ability to command a room without saying a word. It's the magnetic energy that makes people stop, listen, and respect your authority while you remain entirely yourself: poised, grounded, and graceful.

This 5-step blueprint is designed to help you shed the performance of confidence and step into the reality of it. These are the foundational shifts that will help you own your space, protect your energy, and elevate your personal brand.

You were meant to be seen and heard. Let's make sure they never forget you.

With grace and power,

A handwritten signature in black ink that reads "Martine Chery". The script is fluid and cursive, with a prominent initial 'M'.

Founder of The Feminine Platform

STEP 1: MASTER YOUR GROUNDED ANCHOR

The Foundation of Presence

Mastering your grounded anchor means developing the ability to remain emotionally stable, present, and centered in your body, particularly when experiencing stress or high-intensity emotions.

Before you speak a single word, your body is already communicating. When we are nervous or trying too hard to impress, our energy tends to rise our breathing becomes shallow, our shoulders tighten, and we project a rushed or floaty energy. This is often perceived by others as a lack of confidence or authority.



- 1. The Concept:** Presence begins before you speak. It is about how you physically hold your energy.
 - 2. The Action:** Before entering a room, breathe three times deeply and settle your shoulders and lift your chin parallel to the floor. Imagine a steady anchor at your core to eliminate nervous fidgeting.
 - 3. Your Result:** You project relaxed, undeniable confidence instead of a rigid military stance.
-



important tip

To command a room, you must first command your own center. Mastering the Grounded Anchor is about shifting from a state of performance to a state of being. By rooting yourself physically, you signal to the room that you are immovable, composed, and fully present.

Need a practice tip? At The Feminine Platform, we believe in doing the work

The Practice: The "Vertical Root" Method

To master your physical presence, try the Vertical Root exercise before your next meeting or video:

1. The Shoulder Drop: Inhale deeply, shrug your shoulders to your ears, and then exhale sharply while letting them drop completely. This releases the "clutched" energy often held in the upper body.
2. The Center Breath: Place one hand on your lower belly. Breathe into that hand for three counts. This lowers your "vocal center," ensuring your voice sounds rich and steady rather than thin or shaky.

*YOU COMPLETED THIS PRACTICE? TELL US HOW YOU DID!
JOIN THE CONVERSATION IN THE COMMENTS OF OUR LATEST YOUTUBE VIDEO.
DID YOU FEEL AN INSTANT SHIFT IN YOUR CONFIDENCE? WE WANT TO HEAR
YOUR BREAKTHROUGH.*

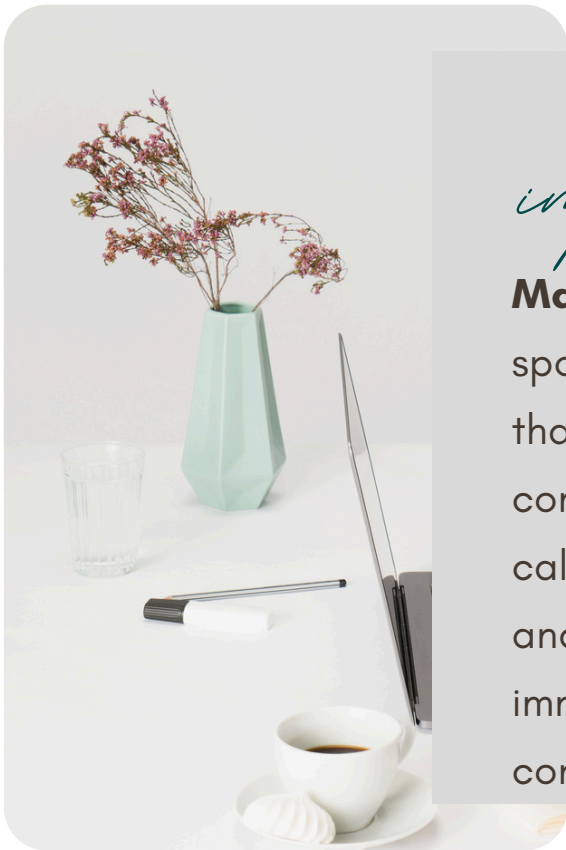
STEP 2: USE MAGNETIC EYE CONTACT

The Bridge of Influence

In the world of high-level leadership and personal branding, **eye contact is more than just looking at someone.** It is an energetic exchange. Most people either look away too quickly out of a subconscious desire to hide, or they stare too intensely in an attempt to dominate. Neither creates a lasting, positive impression.



- 1. The Concept:** Eye contact builds an immediate bridge of trust and authority.
 - 2. The Action:** Instead of a hard stare, maintain a warm, steady focus. Look at others not just while they are talking, but also when it is your turn to speak.
 - 3. Your Result:** You signal respect and certainty, making others feel seen and important.
-



important tip

Magnetic Eye Contact is the sweet spot of presence a warm, steady focus that says, I see you, and I am comfortable being seen. By holding a calm gaze, you stop chasing attention and start attracting it, building an immediate bridge of trust and confidence.

Need a practice tip? At The Feminine Platform, we believe in doing the work

The Practice: The Mirror Connection

To master Magnetic Eye Contact, try the "Mirror Connection" Challenge:

Stand in front of a mirror and maintain eye contact with yourself for 60 seconds without looking away or criticizing your reflection. Soften your gaze until you feel a sense of calm and self-acceptance. Once you can hold your own gaze with ease, holding the gaze of others in a boardroom or on camera will feel like second nature.

*YOU COMPLETED THIS PRACTICE? TELL US HOW YOU DID!
JOIN THE CONVERSATION IN THE COMMENTS OF OUR LATEST YOUTUBE
VIDEO. DID YOU FEEL AN INSTANT SHIFT IN YOUR CONFIDENCE? WE WANT
TO HEAR YOUR BREAKTHROUGH.*

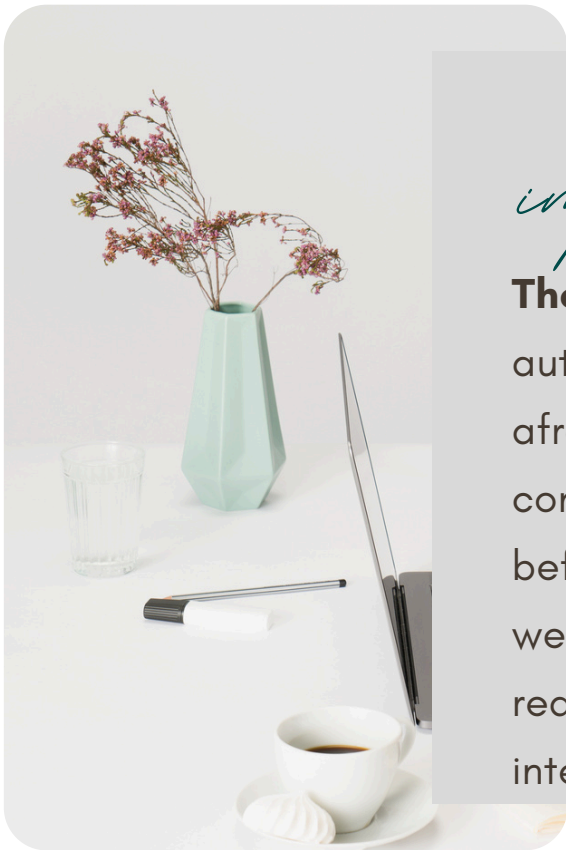
STEP 3: OWN THE POWER PAUSE

The Deep Dive: Silence is a High-Value Skill

In a world that values speed, we often feel pressured to fill every silence. When we are nervous, we rush our sentences, use filler words (like "um" or "ah"), and answer questions before the other person has even finished asking them. This rushed energy signals a subconscious desire to please or a fear of losing the floor.



- 1. The Concept:** Rushing signals anxiety; silence signals mastery.
- 2. The Action:** Practice a 3-second deliberate pause before responding to a question or moving to your next point.
- 3. Your Result:** The room leans in to hear you, and your message carries significantly more weight.



important tip

The Power Pause is the ultimate mark of authority. It shows that you are not afraid of silence and that you are in total control of the narrative. By pausing before you speak, you give your words weight and importance. You aren't just reacting; you are responding with intention.

Need a practice tip? At The Feminine Platform, we believe in doing the work

The Practice: Three-Second Rule

To master your conversational timing, use the Three-Second Rule: The next time someone asks you a question whether in a meeting, an interview, or a casual conversation, do not answer immediately.

1. **Inhale:** Take a soft, silent breath.
2. **Count:** Mentally count one, two, three.
3. **Speak:** Deliver your answer with a calm, steady tone.

The Result: Those three seconds allow you to gather your thoughts, lower your vocal pitch, and force the other person to focus entirely on what you are about to say next.

*YOU COMPLETED THIS PRACTICE? TELL US HOW YOU DID!
JOIN THE CONVERSATION IN THE COMMENTS OF OUR LATEST YOUTUBE
VIDEO. DID THE SILENCE FEEL LOUD AT FIRST, OR DID YOU NOTICE PEOPLE
LISTENING MORE INTENTLY?*

STEP 4: ALIGN YOUR SIGNATURE STYLE

The Deep Dive: Align Your Signature Style

At **The Feminine Platform**, we believe style is not about vanity; it is about **strategy**. Before you even open your mouth, people have already made an assumption about your authority, your attention to detail, and your self-worth based on your visual presentation.



- 1. The Concept:** Your appearance is the visual introduction to your platform.
 - 2. The Action:** Curate a professional image that reflects your identity whether it's a signature color, tailored silhouette, or specific accessory.
 - 3. Your Result:** You harness the halo effect, where being well-presented naturally makes you appear more competent and approachable.
-



important tip

Aligning your signature style means creating a uniform of power that removes decision fatigue and reinforces your brand. When your outer image matches your inner mission, you stop worrying about how you look and start focusing on the impact you are making. You are no longer just "showing up you are making an entrance.

Need a practice tip? At The Feminine Platform, we believe in doing the work

The Practice: Three-Word Style Filter:

To master your visual authority, try the Three-Word Style Filter:

1. **Select Your Words:** Choose three words that describe how you want to be perceived (e.g., Feminine, Elegant, Authoritative).
2. **The Wardrobe Audit:** Look at your outfit for your next big meeting or video. Does it reflect all three words?
3. **The Signature Element:** Add one consistent brand mark. This could be a sculptural gold accessory, a crisp monochromatic palette, or a structured, high-collar silhouette. This becomes your visual shorthand for excellence.

YOU COMPLETED THIS PRACTICE? TELL US HOW YOU DID!
JOIN THE CONVERSATION IN THE COMMENTS OF OUR LATEST YOUTUBE
VIDEO. DID YOU FEEL AN INSTANT SHIFT IN YOUR CONFIDENCE? WE WANT
TO HEAR YOUR BREAKTHROUGH.

STEP 5: SET UNAPOLOGETIC BOUNDARIES

The Deep Dive: The Gatekeeper of Our Platform

At The Feminine Platform, we know that we cannot lead others if we cannot lead yourself. Boundaries are not walls to keep people out; they are the gates that protect the quality of what you build. A woman who constantly over-explains her "No" or apologizes for her limits is subconsciously signaling that her time is less valuable than everyone else's.



- 1. The Concept:** Influence is strongest when you protect your energy and time.
- 2. The Action:** Identify your energy drainers. Practice saying **No** to anything that doesn't align with your goals, without offering an apology or excuse.
- 3. Your Result:** You command respect by demonstrating that you value your own contribution and standards.



important tip

To have a true Feminine Presence, you must be comfortable with the unapologetic no. This doesn't mean being cold; it means being clear. When you stop leaking energy through people-pleasing, you gain the focus and stamina required to build your legacy.

Need a practice tip? At The Feminine Platform, we believe in doing the work

The Practice: The Scripted Standard:

To master your boundaries, try the Scripted Standard exercise:

1. **Identify the Drain:** Choose one request or task that you've been saying "Yes" to out of guilt.
2. **The No-Apology Response:** Practice saying this sentence out loud until it feels natural: Thank you for thinking of me, but I don't have the capacity to take that on right now.
3. **The Silence Rule:** After you say it, stop talking. Do not explain your schedule, mention your kids, or justify your workload. Let the "No" sit.

*YOU COMPLETED THIS PRACTICE? TELL US HOW YOU DID!
JOIN THE CONVERSATION IN THE COMMENTS OF OUR LATEST YOUTUBE
VIDEO. DID YOU NOTICE THE SHIFT IN HOW PEOPLE REACTED TO YOUR
CLARITY? TELL US YOUR BOUNDARY "WIN" IN THE YOUTUBE COMMENTS. WE
CELEBRATE WOMEN WHO CHOOSE THEIR MISSION OVER THEIR COMFORT*

Your Presence is Your Power

Presence is not a destination; it is a daily practice. By mastering your physical anchor, your gaze, your silence, your style, and your boundaries, you aren't just changing how you look you are changing how you exist in the world.

Remember, **The Feminine Platform** was created because the world needs women who lead with grace and authority without losing themselves in the process. You now have the blueprint. The next step is to walk it.

It's time to stop shrinking and start standing in your full, unapologetic light.



Ready to Level Up? Work With Me

If you are ready to move beyond the basics and truly transform your personal brand and leadership style, I am here to guide you. **At The Feminine Platform**, we provide high-impact coaching and consulting designed for the woman who is ready to lead with grace and power.

1. Personalized Color Analysis

Stop guessing which colors look best on you. This service identifies the specific shades that harmonize with your skin, hair, and eyes so you can build a wardrobe that makes you glow. You will receive a custom digital palette and a detailed report.

- **Package starts at: 139\$ CAD**
- **Book here: [Color Analysis](https://www.thefeminineplatform.com/color-analysis/)**
<https://www.thefeminineplatform.com/color-analysis/>



2. Signature Training Programs

Access our full library of digital programs designed to help you master your mindset and leadership. These self-paced courses cover everything from high-value communication to feminine energy in business, giving you the tools to grow on your own schedule.

- **Package starts at: 139\$ CAD**
- **Book here: [Your 1:1 coaching](https://www.thefeminineplatform.com/programs/)**
<https://www.thefeminineplatform.com/programs/>

3. Course in a Box

Want to launch your own platform? This done-for-you digital kit gives you the exact templates and structure you need to package your knowledge into a professional course.

- **Package starts at: 965\$ CAD**
- **Book here:**
<https://www.thefeminineplatform.com/services>



Let's connect



Conclusion

I founded The Feminine Platform because I realized that the greatest barrier to a woman's power is not a lack of talent, but the exhausting pursuit of perfection.

By choosing alignment over perfection, we give ourselves permission to be human, and in that humanity, we find our most undeniable strength.

This is not a space for the casual. This is a dedicated safe space for the Quiet Sovereign, the woman who has decided, quietly and without announcement, that she is done being overlooked.

If you are ready to receive what was always yours to have,
WELCOME.



Thank you!

A feminine woman who gets to know herself is a woman who walks with grace and power.

Martine Chery

God-driven | Feminine | Aligned

Helping visionary women steward their image and influence.



info@thefeminineplatform.com

www.thefeminineplatform.com
